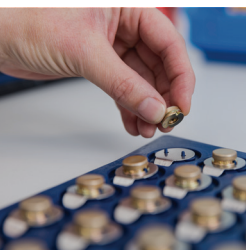


POTTED INSERTS

PRODUCT CATALOGUE



Your added
value solution
provider





NAS Equivalent - Metal Inserts

• CM1832 NAS1832 Blind	7
• CM1833 NAS1833 Through	8
• CM1834 NAS1834 Thru Clearance Hole & CSK	9
• CM1835 NAS1835 Floating	10
• CM1836 NAS1836 Blind, Lightweight	11

Imperial Metallic Inserts

• CM618 Blind, Floating, Ultra Lightweight	12
• CM644 Blind, Lightweight	13
• CM2334 Blind, Floating, Lightweight	14

Metric Metallic Inserts

• CM601M Blind	15
• CM602M Through	16
• CM603M Thru Clearance Hole & CM604M CSK	17
• CM606M Floating	18
• CM607M Blind, Lightweight	19
• CM618M Blind, Floating, Ultra Lightweight	20
• CM644M Blind, Lightweight	21
• CM2334M Blind, Floating, Lightweight	22
• NEW - 110-1381 Magnet Potted Insert	23
• NEW - Plug and Sleeve Potted Insert	24

Tabs

• Spare Tab Purchasing Guide NAS1837	24-25
--------------------------------------	-------

Cross Reference Guide

• Insert Cross Reference Guide	26
--------------------------------	----



Clarendon Specialty Fasteners is an EN/AS 9100 manufacturer of inserts commonly used in honeycomb panels. Parts are produced in Meßstetten in the south of Germany.

We manufacture inserts to aerospace standards (NAS1832, NAS1833, NAS1834, NAS1835, NAS1836, NAS1837) and customer specials made to custom drawings and specifications with full aerospace traceability.

Parts are supplied with full aerospace traceability and test reports.

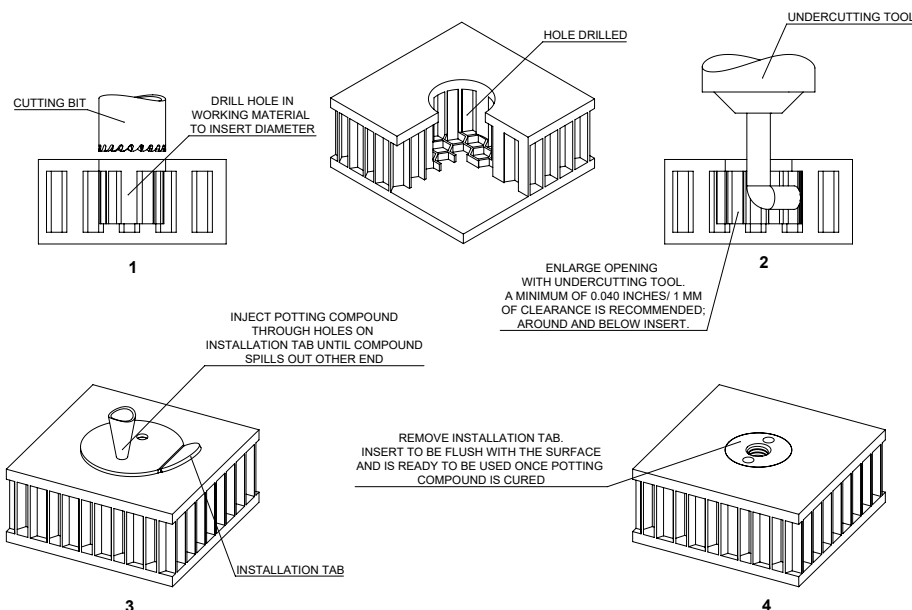
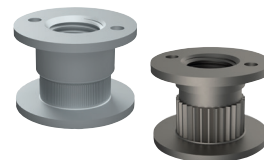
Why Choose Clarendon?

- **EN / AS 9100 & 9120 manufacturer**
- **Various packaging options**
Trays, tubes and bulk packed
- **Special inserts made to customer drawings**

Composite Potted Inserts are used to attach and fasten honeycomb sandwich structures. These are commonly referred to as "Wall Panel Inserts" or "Floating Inserts" because they are widely used in aircraft walls and stowage bins to fasten panels to each other and to the aircraft structure. However, potted inserts can be used anywhere a fastener is desired, particularly where blind holes that do not pass all the way through the panel are needed or where inserts must be "flush" with the panel skin. Once the hole is drilled and insert installed, adhesive bonding is added to hold it in place.

They are made from a high-tech composite thermoplastic called Ultem or in different types of metal.

In the figure below, a hole is drilled into or through the panel and the potted-in insert is placed into the hole where the adhesive backed installation tab keeps it from falling all the way into the hole. In fact, when using blind inserts, an insert length should be selected that does not allow the insert to touch the inner surface of the bottom skin. A minimum of 0.040 inches clearance is recommended to allow the adhesive to flow under and around the insert.



Materials and Finishing

- **Standard Materials**
Steel, CRES (Stainless Steel) and Aluminium
- **Standard Finishing**
CAD Plated, Passivated, Anodized, Silver Plating and Molykote
- **Special Materials**
Aerospace grade metals

Tabs

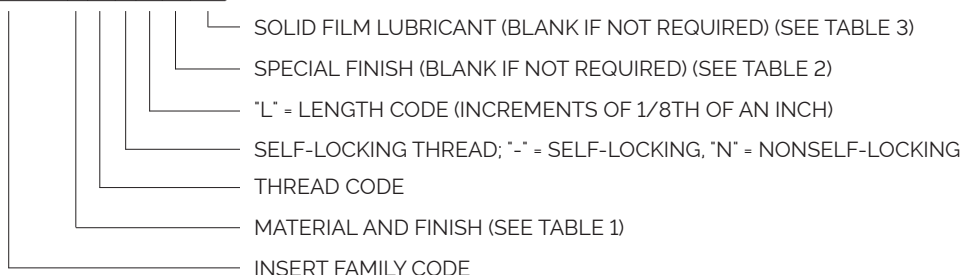
- **Tabs made to NAS1837 standard**
Available in Plastic or Aluminium
- **Option for mounted tabs**
Pre-installed tabs ready to be used in the assembly line
- **Custom Made Tabs**
Available in right-angle shape for corner applications



EXAMPLE PART NUMBER CALL OUT

NAS1832

CM1832-4-6S M



PART NUMBER CALL OUT: CM1832-CARBON STEEL-CADMIUM PLATE-.2500-28-SELF-LOCKING-.750"-SILVER PLATE-MOLYKOTE

Table 1

Code	Material	Finish
-	CARBON STEEL EN 10726	CADMIUM PLATE AMS-QQ-P-416, TYPE II, CLASS 2
C	STAINLESS STEEL EN 14305	PASSIVATE PER AMS2700, METHOD 1, TYPE 2, CLASS 4
A	ALUMINIUM 3.1354 T351	ANODISE PER MIL-A-8625 TYPE I, CLASS 1

Table 2

Code	Special Finish (Stainless Steel Only)
P	CADMIUM PLATE AMS-QQ-P-416, TYPE II, CLASS 2
S	SILVER PLATE AMS2410

Table 3

Code	Solid Film Lubricant (Internal Threads Only)
M	MOLYKOTE PER AS5272, TYPE 1

Table 4 - Special Materials (Available on Request)

Special Materials and Finishing
For Titanium, Ultem and other Aerospace grade metals please contact Sales.

Note: All CM inserts come with tabs provided.

Cross Reference

Clarendon Made	NAS Standards	SFS	The Young Engineers	Shur Lok
CM1832	NAS1832	EF1832	TYE2002	SL601

Table 1

Code	Thread	Ø A	C	L (min)	H (min)	Tab
06	.1380-32 UNJC - 3B	0.560	0.12	0.37	0.25	T3
08	.1640-32 UNJC - 3B					
3	.1900-32 UNJF - 3B					
4	.2500-28 UNJF - 3B	0.685	0.14	0.50	0.31	T6
5	.3125-24 UNJF - 3B		0.16			
6	.3750-24 UNJF - 3B		0.22		0.37	T9

Dimension in INCH

Table 2

Code	Material	Finish	Type
-	CARBON STEEL EN 10726	CADMIUM PLATE AMS-QQ-P-416, TYPE II, CLASS 2	Type 1
C	STAINLESS STEEL EN 14305	PASSIVATE PER AMS2700, METHOD 1, TYPE 2, CLASS 4	
A	ALUMINIUM 3.1354 T351	ANODISE PER MIL-A-8625 TYPE I, CLASS 1	Type 2
D	ALUMINIUM 7075-T73	SURTEC 650	

Table 3

Code	Special Finish (Stainless Steel Only)
P	CADMIUM PLATE AMS-QQ-P-416, TYPE II, CLASS 2
S	SILVER PLATE AMS2410

Table 4

Code	Solid Film Lubricant (Internal Threads Only)
M	MOLYKOTE PER AS5272, TYPE 1

Table 5

Length Code	L
3	0.375
4	0.500
5	0.625
6	0.750
7	0.875
8	1.000
9	1.125
10	1.250

PART NUMBER CALL OUT

NAS1832
CM1832-4-6

- "L" = LENGTH CODE (INCREMENTS OF 1/8TH OF AN INCH)
- SELF-LOCKING THREAD; "-" = SELF-LOCKING, "N" = NONSELF-LOCKING
- THREAD CODE (SEE TABLE 1)
- MATERIAL AND FINISH (SEE TABLE 2)
- INSERT FAMILY CODE

PART NUMBER CALL OUT: CM1832-CARBON STEEL-CADMIUM PLATE-.2500-28-SELF-LOCKING-.750"

Potted Inserts

CM1833 INSERT, THROUGH THREADED

Available in:



Cross Reference

Clarendon Made	NAS Standards	SFS	The Young Engineers	Shur Lok
CM1833	NAS1833	EF1833	TYE2007	SL602

Table 1

Code	Thread	Ø A	C	L (min)	H (min)	Tab
06	.1380-32 UNJC - 3B	0.560	0.12	0.250	0.276	T3
08	.1640-32 UNJC - 3B				0.328	
3	.1900-32 UNJF - 3B				0.380	
4	.2500-28 UNJF - 3B	0.685	0.14	0.312	0.500	T6
5	.3125-24 UNJF - 3B		0.16		0.625	
6	.3750-24 UNJF - 3B	0.841	0.22	0.375	0.750	T9

Dimension in INCH

Table 2

Code	Material	Finish	Type
-	CARBON STEEL EN 10726	CADMIUM PLATE AMS-QQ-P-416, TYPE II, CLASS 2	Type 1
C	STAINLESS STEEL EN 1.4305	PASSIVATE PER AMS2700, METHOD 1, TYPE 2, CLASS 4	
A	ALUMINIUM 3.1354 T351	ANODISE PER MIL-A-8625 TYPE I, CLASS 1	Type 2

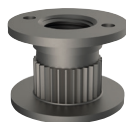
Table 3

Code	Special Finish (Stainless Steel Only)
P	CADMIUM PLATE AMS-QQ-P-416, TYPE II, CLASS 2
S	SILVER PLATE AMS2410

Table 4

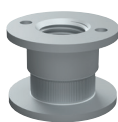
Code	Solid Film Lubricant (Internal Threads Only)
M	MOLYKOTE PER AS5272, TYPE 1

Type 1

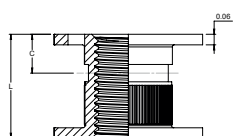
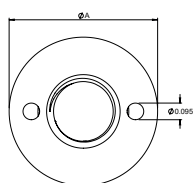


Steel and
Stainless Steel

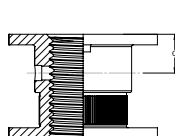
Type 2



Aluminium



STEEL AND STAINLESS STEEL
BODY TYPE



ALUMINIUM BODY TYPE

PART NUMBER CALL OUT

NAS1833

CM1833 - 4 - 600

- "L" = LENGTH IN INCHES (1/1000th)
- SELF-LOCKING THREAD; "-" = SELF-LOCKING, "N" = NONSELF-LOCKING
- THREAD CODE (SEE TABLE 1)
- MATERIAL AND FINISH (SEE TABLE 2)
- INSERT FAMILY CODE

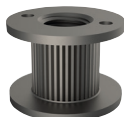
PART NUMBER CALL OUT: CM1833-CARBON STEEL-CADMIUM PLATE-.2500-28-SELF-LOCKING-.600"



Cross Reference

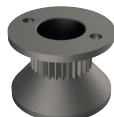
Type	Clarendon Made	NAS Standards	SFS	The Young Engineers	Shur Lok
1	CM1834	NAS1834	EF1834	TYE2003	SL603
2	CM1834K	NAS1834K	EF1834	TYE2004	SL604

Type 1 (-)



Standard

Type 2 (K)



Countersunk

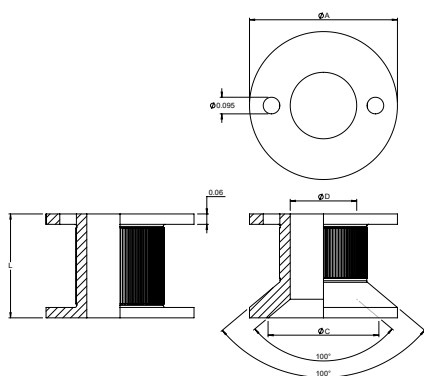


Table 1

Code	Ø A	Ø C *CSK only	Ø D	L (min)	Tab
06	0.560	0.280	0.139 / 0.145	0.250	T3
08		0.332	0.168 / 0.174		
3		0.385	0.195 / 0.201		
4	0.685	0.507	0.256 / 0.263	0.312	T6
5		0.625	0.315 / 0.322		
6	0.841	0.750	0.376 / 0.383	0.375	T9

Dimension in INCH

Table 2

Code	Material	Finish
-	CARBON STEEL EN 1.0726	CADMIUM PLATE AMS-QQ-P-416, TYPE II, CLASS 2
C	STAINLESS STEEL EN 1.4305	PASSIVATE PER AMS2700, METHOD 1, TYPE 2, CLASS 4
A	ALUMINIUM 3.1354 T351	ANODISE PER MIL-A-8625 TYPE I, CLASS 1
D	ALUMINIUM 7075-T73	SURTEC 650

D outside NAS Spec.

PART NUMBER CALL OUT

NAS1834

CM1834-6-600

- "L" = LENGTH IN INCHES (1/1000th)
- TYPE; "-" = NO COUNTERSINK, "K" = COUNTERSINK
- SIZE CODE (SEE TABLE 1)
- MATERIAL AND FINISH (SEE TABLE 2)
- INSERT FAMILY CODE

PART NUMBER CALL OUT: CM1834-CARBON STEEL-CADMIUM PLATE-SIZE CODE 6-NO COUNTERSINK-.600"

Potted Inserts

CM1835 INSERT, BLIND, FLOATING NUT

Available in:



Cross Reference

Clarendon Made	NAS Standards	SFS	The Young Engineers	Shur Lok
CM1835	NAS1835	EF1835	TYE1835	SL606

Table 1

Code	Thread	Ø A	C	L	Tab
08	.1640-32 UNJC - 3B	0.685	0.16	0.37	T7
3	.1900-32 UNJF - 3B			0.43	
4	.2500-28 UNJF - 3B	0.748	0.18	0.56	T9
5	.3125-24 UNJF - 3B	0.810	0.20	0.75	T10
6	.3750-24 UNJF - 3B	0.873	0.22	0.81	T11

Dimension in INCH

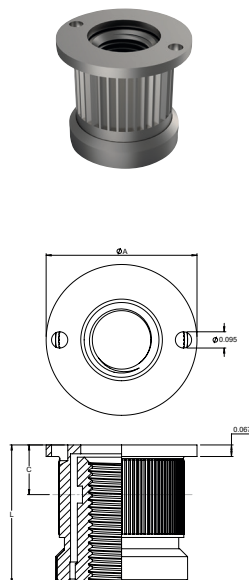


Table 2

Code	Material	Finish
-	CARBON STEEL EN 10726 (NUT & BODY)	CADMIUM PLATE AMS-QQ-P-416, TYPE II, CLASS 2
C	STAINLESS STEEL EN 14305 (NUT & BODY)	PASSIVATE PER AMS2700, METHOD 1, TYPE 2, CLASS 4
A	ALUMINIUM 3.1354 T351 (BODY)	ANODISE PER MIL-A-8625 TYPE I, CLASS 1
	CARBON STEEL EN 10726 (NUT)	CADMIUM PLATE PER AMS-QQ-P-416, TYPE II, CLASS 2

Table 3

Code	Special Finish (Stainless Steel Only)
P	CADMIUM PLATE AMS-QQ-P-416, TYPE II, CLASS 2 (NUT ONLY)
S	SILVER PLATE AMS2410 (NUT ONLY)

Table 4

Code	Solid Film Lubricant (Internal Threads Only)
M	MOLYKOTE PER AS5272, TYPE 1

PART NUMBER CALL OUT

NAS1835

CM1835 - 4 N

- SELF-LOCKING THREAD; "NO CODE" = SELF LOCKING, "N" = NONSELF-LOCKING
- SIZE CODE (SEE TABLE 1)
- MATERIAL AND FINISH (SEE TABLE 2)
- INSERT FAMILY CODE

PART NUMBER CALL OUT: CM1835-CARBON STEEL-CADMIUM PLATE-.3750-24-NONSELF-LOCKING



Cross Reference

Clarendon Made	NAS Standards	SFS	The Young Engineers	Shur Lok
CM1836	NAS1836	EF1836	TYE2001	SL607

Table 1

Code	Thread	Ø A	C	H (min)	L (min)	Tab
04	0.1120-40 UNJC - 3B	0.451	0.12	0.187	0.217	T2
06	.1380-32 UNJC - 3B					
08	.1640-32 UNJC - 3B					
3	.1900-32 UNJF - 3B					
4	.2500-28 UNJF - 3B	0.498	0.14	0.250	0.279	T4

Dimension in INCH

Table 2

Code	Material	Finish	Type
-	CARBON STEEL EN 1.0726	CADMIUM PLATE AMS-QQ-P-416, TYPE II, CLASS 2	Type 1
C	STAINLESS STEEL EN 1.4305	PASSIVATE PER AMS2700, METHOD 1, TYPE 2, CLASS 4	
A	ALUMINIUM 3.1354 T351	ANODISE PER MIL-A-8625 TYPE I, CLASS 1	Type 2
D	ALUMINIUM 7075-T73	ANODISED PER MIL-A-8625 TYPE II, CLASS 1 (NICKEL ACETATE SEAL)	

D outside NAS Spec.

Table 3

Code	Special Finish (Stainless Steel Only)
P	CADMIUM PLATE AMS-QQ-P-416, TYPE II, CLASS 2
S	SILVER PLATE AMS2410

Table 4

Code	Solid Film Lubricant (Internal Threads Only)
M	MOLYKOTE PER AS5272, TYPE 1

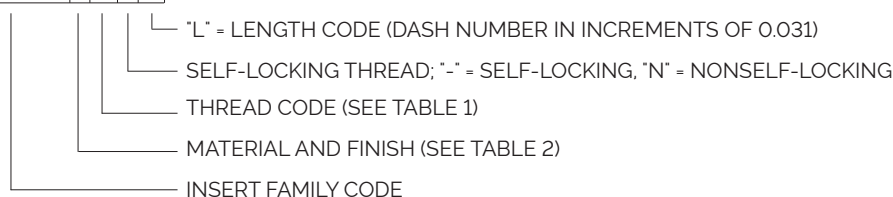
Table 5

Length Code	L	Length Code	L
07	0.217	16	0.496
08	0.248	17	0.527
09	0.279	18	0.558
10	0.310	19	0.589
11	0.341	20	0.620
12	0.372	21	0.651
13	0.403	22	0.682
14	0.434	23	0.713
15	0.465	24	0.744

PART NUMBER CALL OUT

NAS1836

CM1836-3-8



PART NUMBER CALL OUT: CM1836-CARBON STEEL-CADMIUM PLATE-1900-32-SELF-LOCKING-.248"

Potted Inserts

CM618 INSERT, THIN PANEL, BLIND, FLOATING NUT, ULTRA LIGHTWEIGHT

Available in:



Cross Reference

Clarendon Made	SFS	The Young Engineers	Shur Lok
CM618	EF1840	TYE2018	SL618

Table 1

Code	Thread	Ø A	L	Tab
04	.1120-40 UNJC - 3B	0.559	0.240	T6
06	.1380-32 UNJC - 3B			
08	.1640-32 UNJC - 3B			
3	.1900-32 UNJF - 3B			

Dimension in INCH

Table 2

Code	Material	Finish
B	CARBON STEEL EN 10726 (NUT & BODY)	CADMIUM PLATE PER AMS-QQ-P-416, TYPE II, CLASS 2
C	STAINLESS STEEL EN 1.4305 (NUT & BODY)	PASSIVATE PER AMS2700, METHOD 1, TYPE 2, CLASS 4
A	ALUMINIUM 3.1354 T351 (BODY)	ANODISE PER MIL-A-8625 TYPE I, CLASS 1
	CARBON STEEL EN 10726 (NUT)	CADMIUM PLATE PER AMS-QQ-P-416, TYPE II, CLASS 2

Table 3

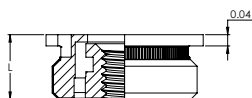
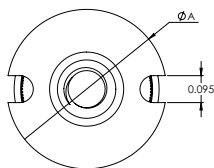
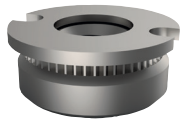
Code	Special Finish (Stainless Steel Only)
P	CADMIUM PLATE AMS-QQ-P-416, TYPE II, CLASS 2 (NUT ONLY)
S	SILVER PLATE AMS2410 (NUT ONLY)

Table 4

Code	Solid Film Lubricant (Internal Threads Only)
M	MOLYKOTE PER AS5272, TYPE 1

Table 5

Locking Torque in Ncm					
Thread Size	04	06	08	3	4
Torque Value	9-50	12-70	22-110	30-150	55-230



PART NUMBER CALL OUT

CM618-08N|B

- MATERIAL AND FINISH (SEE TABLE 2)
- SELF-LOCKING THREAD; "NO CODE" = SELF-LOCKING, "N" = NONSELF-LOCKING
- SIZE CODE (SEE TABLE 1)
- INSERT FAMILY CODE (IMPERIAL)

PART NUMBER CALL OUT: CM618-.1640-32-NONSELF-LOCKING-CARBON STEEL-CADMIUM PLATE



Cross Reference

Clarendon Made	SFS	The Young Engineers	Shur Lok
CM644	EF1838	TYE2044	SL644

Table 1

Code	Thread	Ø A	C	L (min)	H (min)	Tab
04	.1120-40 UNJC-3B	0.451	0.122	0.169	0.138	T2
06	.1380-32 UNJC-3B					
08	.1640-32 UNJC-3B			0.219	0.189	
3	.1900-32 UNJF-3B	0.498	0.142	0.281	0.201	T4
4	.2500-28 UNJF-3B					

Dimension in INCH

Table 2

Code	Material	Finish
-	CARBON STEEL EN 10726	CADMIUM PLATE AMS-QQ-P-416, TYPE II, CLASS 2
C	STAINLESS STEEL EN 1.4305	PASSIVATE PER AMS2700, METHOD 1, TYPE 2, CLASS 4

Table 3

Code	Special Finish (Stainless Steel Only)
P	CADMIUM PLATE AMS-QQ-P-416, TYPE II, CLASS 2
S	SILVER PLATE AMS2410

Table 4

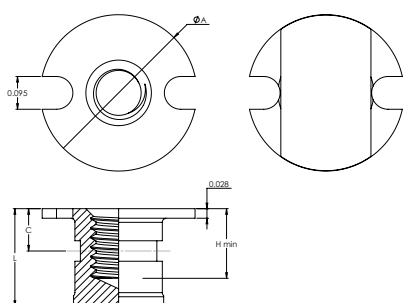
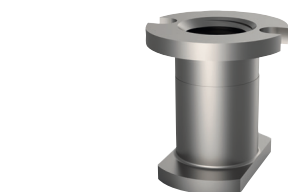
Code	Solid Film Lubricant (Internal Threads Only)
M	MOLYKOTE PER AS5272, TYPE 1

Table 5

Code	L
3	4.30
4	5.55
5	7.15
6	8.70
7	10.10
8	11.50
9	12.70
10	14.00
11	17.45

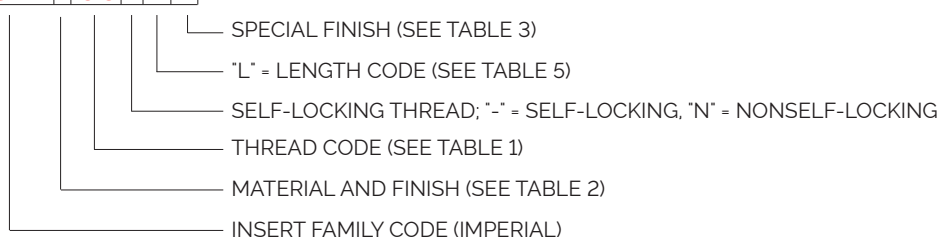
Table 6

Locking Torque in Ncm					
Thread Size	04	06	08	3	4
Torque Value	9-50	12-70	22-110	30-150	55-230



PART NUMBER CALL OUT

CM644-06-7P



PART NUMBER CALL OUT: CM644-CARBON STEEL-.1380-32-SELF-LOCKING-10.10-CADMIUM PLATE

Potted Inserts

CM2334 INSERT, BLIND THREADED, FLOATING NUT LIGHTWEIGHT

Available in:



Cross Reference

Clarendon Made	SFS	The Young Engineers	Shur Lok
CM2334	EF1842	TYE2334	SL2334

Table 1

Code	Thread	Ø A	C	Tab
04	.1120-40 UNJC - 3B	0.561	0.14	T6
06	.1380-32 UNJC - 3B			
08	.1640-32 UNJC - 3B		0.16	
3	.1900-32 UNJF - 3B			
4	.2500-28 UNJF - 3B	0.685	0.18	T9

Dimension in INCH

Table 2

Code	Material	Finish
-	CARBON STEEL EN 10726 (NUT & BODY)	CADMIUM PLATE AMS-QQ-P-416, TYPE II, CLASS 2
C	STAINLESS STEEL EN 14305 (NUT & BODY)	PASSIVATE PER AMS2700, METHOD 1, TYPE 2, CLASS 4
A	ALUMINIUM 3.1354 T351 (BODY)	ANODISE PER MIL-A-8625 TYPE I, CLASS 1
	CARBON STEEL EN 10726 (NUT)	CADMIUM PLATE PER AMS-QQ-P-416, TYPE II, CLASS 2
D	ALUMINIUM EN 3.1354 T351 OR EN 3.1355 T4 (BODY)	LN9368-1101 - ALTERNATIVE -ANODISE TO MIL-A-8625 TYPE I, CLASS 1
	STAINLESS STEEL EN 14305 (NUT)	PASSIVATE PER AMS2700, METHOD 1, TYPE 2, CLASS 4

Table 3

Code	Special Finish (Stainless Steel Only)
P	CADMIUM PLATE AMS-QQ-P-416, TYPE II, CLASS 2 (NUT ONLY)
S	SILVER PLATE AMS2410 (NUT ONLY)

Table 4

Option	L
1	0.310
2	0.350
3	0.375
4	0.455
5	0.565
6	0.690
7	0.815
8	0.935
9	1.060
10	1.185

Table 5

Code	Solid Film Lubricant (Internal Threads Only)
M	MOLYKOTE PER AS5272, TYPE 1

Table 6

Locking Torque in Ncm					
Thread Size	04	06	08	3	4
Torque Value	9-50	12-70	22-110	30-150	55-230

PART NUMBER CALL OUT

CM2334-3-5N

- SELF-LOCKING THREAD; "-" = SELF-LOCKING, "N" = NONSELF-LOCKING
- "L" = LENGTH CODE (SEE TABLE 4)
- MATERIAL AND FINISH (SEE TABLE 2)
- SIZE CODE (SEE TABLE 1)
- INSERT FAMILY CODE (IMPERIAL)

PART NUMBER CALL OUT: CM2334-1900-32-CARBON STEEL-CADMIUM PLATE-.565"-NONSELF-LOCKING



Cross Reference

Clarendon Made	SFS	The Young Engineers	Shur Lok
CM601M	EF1001	TYE2002M	SL601M

Table 1

Code	Thread	Ø A	C	L (min)	H (min)	Tab
3	M3 x 0.5 - 4H6H	14.20	3.0	9.4	6.4	T3
4	M4 x 0.7 - 4H6H					
5	M5 x 0.8 - 4H6H					
6	M6 x 1.0 - 4H5H	17.40	3.6	12.7	7.9	T6
8	M8 x 1.25 - 4H5H		4.1			
10	M10 x 1.5 - 4H5H	21.35	5.6		9.4	T9
12	M12 x 1.75 - 4H5H	21.90				T10

Dimension in MM

Table 2

Code	Material	Finish	Type
B	CARBON STEEL EN 1.0726	CADMIUM PLATE AMS-QQ-P-416, TYPE II, CLASS 2	Type 1
C	STAINLESS STEEL EN 1.4305	PASSIVATE PER AMS2700, METHOD 1, TYPE 2, CLASS 4	
A	ALUMINIUM 3.1354 T351	ANODISE PER MIL-A-8625 TYPE I, CLASS 1	Type 2

Table 3

Code	Special Finish (Stainless Steel Only)
P	CADMIUM PLATE AMS-QQ-P-416, TYPE II, CLASS 2
S	SILVER PLATE AMS2410

Table 5

Code	Solid Film Lubricant (Internal Threads Only)
M	MOLYKOTE PER AS5272, TYPE 1

Table 6

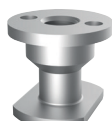
Locking Torque in Ncm							
Thread Size	M3	M4	M5	M6	M8	M10	M12
Torque Value	12-70	22-110	30-150	55-230	85-570	120-870	177-1480

Type 1

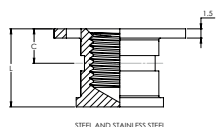
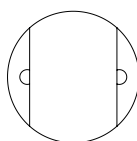
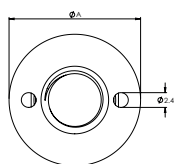


Steel and
Stainless Steel

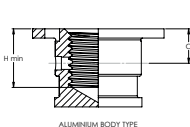
Type 2



Aluminium



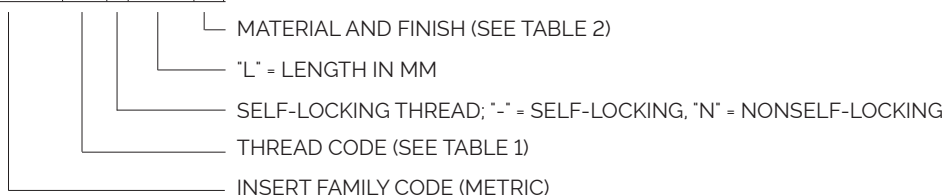
STEEL AND STAINLESS STEEL
BODY TYPE



ALUMINIUM BODY TYPE

PART NUMBER CALL OUT

CM601M|10|-12.7|B



PART NUMBER CALL OUT: CM601M-M10 X 1.5-SELF-LOCKING-12.70MM-CARBON STEEL-CADMIUM PLATE

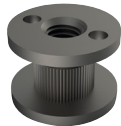
Potted Inserts

CM602M METRIC INSERT, THROUGH THREADED

Available in:

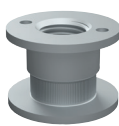


Type 1

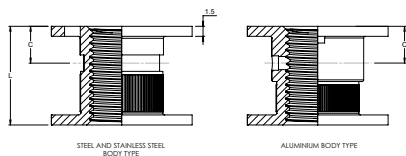
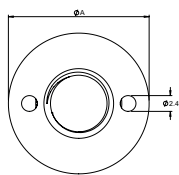


Steel and
Stainless Steel

Type 2



Aluminium



Cross Reference

Clarendon Made	SFS	The Young Engineers	Shur Lok
CM602M	EF1002	TYE2002M	SL602 M

Table 1

Code	Thread	Ø A	C	H min	L (min)	Tab
3	M3 x 0.5 - 4H6H	14.20	3.0	7.00	6.35	T3
4	M4 x 0.7 - 4H6H			8.32		
5	M5 x 0.8 - 4H6H			9.65		
6	M6 x 1.0 - 4H5H	17.40	3.6	12.70	7.00	T6
8	M8 x 1.25 - 4H5H		4.1	15.80		
10	M10 x 1.5 - 4H5H	21.35	5.6	19.05	10.00	T9
12	M12 x 1.75 - 4H5H	21.90		24.00	10.00	T10

Dimension in MM

Table 2

Code	Material	Finish	Type
B	CARBON STEEL EN 10726	CADMIUM PLATE AMS-QQ-P-416, TYPE II, CLASS 2	Type 1
C	STAINLESS STEEL EN 14305	PASSIVATE PER AMS2700, METHOD 1, TYPE 2, CLASS 4	
A	ALUMINIUM 3.1354 T351	ANODISE PER MIL-A-8625 TYPE I, CLASS 1	Type 2

Table 3

Code	Special Finish (Stainless Steel Only)
P	CADMIUM PLATE AMS-QQ-P-416, TYPE II, CLASS 2
S	SILVER PLATE AMS2410

Table 4

Code	Solid Film Lubricant (Internal Threads Only)
M	MOLYKOTE PER AS5272, TYPE 1

Table 5

Locking Torque in Ncm							
Thread Size	M3	M4	M5	M6	M8	M10	M12
Torque Value	12-70	22-110	30-150	55-230	85-570	120-870	177-1480

PART NUMBER CALL OUT

CM602M 8 - 14.0 B

- MATERIAL AND FINISH (SEE TABLE 2)
- "L" = LENGTH IN MM
- SELF-LOCKING THREAD; "L" = SELF-LOCKING, "N" = NONSELF-LOCKING
- THREAD CODE (SEE TABLE 1)
- INSERT FAMILY CODE (METRIC)

PART NUMBER CALL OUT: CM602M-M8 x 1.25-SELF-LOCKING-14MM-CARBON STEEL-CADMIUM PLATE



Cross Reference

Type	Clarendon Made	SFS	The Young Engineers	Shur Lok
1	CM603M	EF1003	TYE2003M	SL603 M
2	CM604M	EF1004	TYE2004M	SL604 M

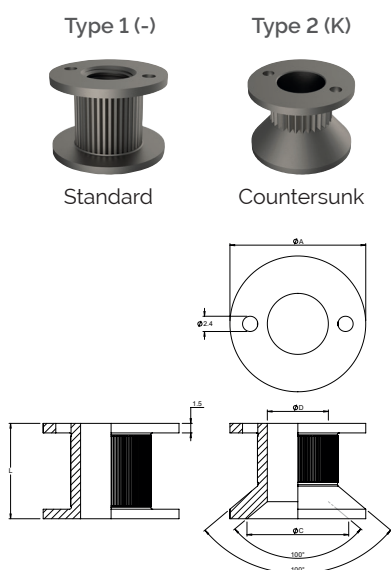


Table 1

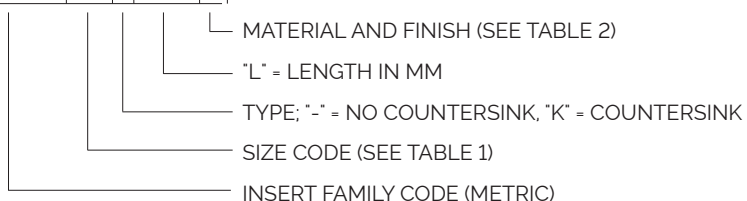
Code	Ø A	Ø C CSK only	Ø D	L (min)	Tab
3	14.20	6.00	3.10	6.35	T3
4		8.00	4.10		
5		10.00	5.20		
6	17.40	12.00	6.20	7.90	T6
7		14.00	7.10		
8		16.00	8.20		
10	21.35	20.00	10.30	9.50	T9 Dimension in MM

Table 2

Code	Material	Finish
B	CARBON STEEL EN 1.0726	CADMIUM PLATE AMS-QQ-P-416, TYPE II, CLASS 2
C	STAINLESS STEEL EN 1.4305	PASSIVATE PER AMS2700, METHOD 1, TYPE 2, CLASS 4
A	ALUMINIUM 3.1354 T351	ANODISE PER MIL-A-8625 TYPE I, CLASS 1
D	ALUMINIUM 7075-T73 (Type 1 only)	SURTEC 650

PART NUMBER CALL OUT

CM603M10-15.5B



PART NUMBER CALL OUT: CM603M-SIZE CODE 10-SELF-LOCKING-15.5MM-CARBON STEEL-CADMIUM PLATE

Potted Inserts

CM606M METRIC INSERT, BLIND, FLOATING NUT

Available in:



Cross Reference

Clarendon Made	SFS	The Young Engineers	Shur Lok
CM606M	EF1005	TYE1835M	SL606 M

Table 1

Code		Ø A	C	Ø D (max)	L	Tab
3	M3 x 0.5 - 4H6H	17.40	4.1	13.84	9.4	T7
4	M4 x 0.7 - 4H6H				10.9	
5	M5 x 0.8 - 4H6H					
6	M6 x 1.0 - 4H5H	19.00	4.6	18.67	14.2	T9
8	M8 x 1.25 - 4H5H	20.55	5.1	20.32	19.0	T10
10	M10 x 1.5 - 4H5H	22.15	5.6	21.97	20.6	T11

Dimension in MM

Table 2

Code	Material	Finish
B	CARBON STEEL EN 10726 (NUT & BODY)	CADMIUM PLATE AMS-QQ-P-416, TYPE II, CLASS 2
C	STAINLESS STEEL EN 14305 (NUT & BODY)	PASSIVATE PER AMS2700, METHOD 1, TYPE 2, CLASS 4
A	ALUMINIUM 3.1354 T351 (BODY)	ANODISE PER MIL-A-8625 TYPE I, CLASS 1
	CARBON STEEL EN 10726 (NUT)	CADMIUM PLATE PER AMS-QQ-P-416, TYPE II, CLASS 2

Table 3

Code	Special Finish (Stainless Steel Only)
P	CADMIUM PLATE AMS-QQ-P-416, TYPE II, CLASS 2 (NUT ONLY)
S	SILVER PLATE AMS2410 (NUT ONLY)

Table 4

Code	Solid Film Lubricant (Internal Threads Only)
M	MOLYKOTE PER AS5272, TYPE 1

Table 5

Thread Locking Torque in Ncm						
Thread Size	M3	M4	M5	M6	M8	M10
Torque Value	12-70	22-110	30-150	55-230	85-570	120-870

PART NUMBER CALL OUT

CM606M10NB

- MATERIAL AND FINISH (SEE TABLE 2)
- SELF-LOCKING THREAD; "NO CODE" = SELF-LOCKING, "N" = NONSELF-LOCKING
- SIZE CODE (SEE TABLE 1)
- INSERT FAMILY CODE (METRIC)

PART NUMBER CALL OUT: CM606M-M10 x 1.5-NONSELF-LOCKING-CARBON STEEL-CADMIUM PLATE



Cross Reference

Clarendon Made	SFS	The Young Engineers	Shur Lok
CM607M	EF1006	TYE2001M	SL607 M

Table 1

Code	Thread	Ø A	C	L (min)	H (min)	Tab
3	M3 x 0.5 - 4H6H	11.45	3.0	4.50	4.75	T2
4	M4 x 0.7 - 4H6H					
5	M5 x 0.8 - 4H6H					
6	M6 x 1.0 - 4H5H	12.65	3.6	7.10	6.35	T4
8	M8 x 1.25 - 4H5H	14.65	4.1	9.50	6.90	T6

Dimension in MM

Table 2

Code	Material	Finish	Type
B	CARBON STEEL EN 1.0726	CADMIUM PLATE AMS-QQ-P-416, TYPE II, CLASS 2	Type 1
C	STAINLESS STEEL EN 1.4305	PASSIVATE PER AMS2700, METHOD 1, TYPE 2, CLASS 4	
A	ALUMINIUM 3.1354 T351	ANODISE PER MIL-A-8625 TYPE I, CLASS 1	Type 2
D	ALUMINIUM 7075-T73	ANODISED PER MIL-A-8625 TYPE II, CLASS 1 (NICKEL ACETATE SEAL)	

Table 3

Code	Special Finish (Stainless Steel Only)
P	CADMIUM PLATE AMS-QQ-P-416, TYPE II, CLASS 2
S	SILVER PLATE AMS2410

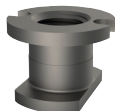
Table 4

Code	Solid Film Lubricant (Internal Threads Only)
M	MOLYKOTE PER AS5272, TYPE 1

Table 5

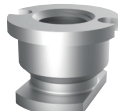
Thread Locking Torque in Ncm						
Thread Size	06	08	3	4	5	6
Torque Value	12-70	22-110	30-150	55-230	85-570	120-870

Type 1

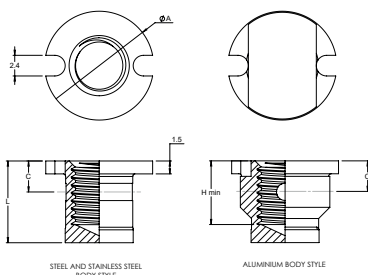


Steel and
Stainless Steel

Type 2

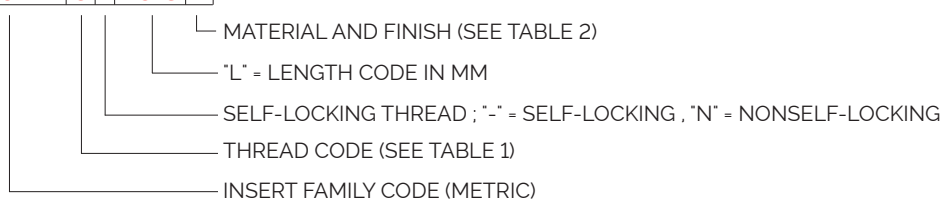


Aluminium



PART NUMBER CALL OUT

CM607M | **6** | **-10.5** | **B**



PART NUMBER CALL OUT: CM607M-M6 x 1.0-SELF-LOCKING-10.5MM-CARBON STEEL-CADMIUM PLATE

Potted Inserts

CM618M METRIC INSERT, THIN PANEL, BLIND, FLOATING NUT, ULTRA LIGHTWEIGHT

Available in:



Cross Reference

Clarendon Made	SFS	The Young Engineers	Shur Lok
CM618M	EF1840	TYE2018	SL618 M

Table 1

Code	Thread	Ø A	L	Tab
3	M3 x 0.5 - 4H6H	14.22	2.40	T6
4	M4 x 0.7 - 4H6H			
5	M5 x 0.8 - 4H6H			

Dimension in MM

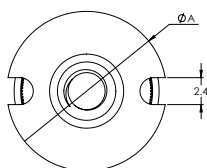
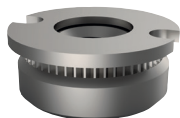


Table 2

Code	Material	Finish
B	CARBON STEEL EN 10726 (NUT & BODY)	CADMIUM PLATE PER AMS-QQ-P-416, TYPE II, CLASS 2
C	STAINLESS STEEL EN 1.4305 (NUT & BODY)	PASSIVATE PER AMS2700, METHOD 1, TYPE 2, CLASS 4
A	ALUMINIUM 3.1354 T351 (BODY)	ANODISE PER MIL-A-8625 TYPE I, CLASS 1
	CARBON STEEL EN 10726 (NUT)	CADMIUM PLATE PER AMS-QQ-P-416, TYPE II, CLASS 2

Table 3

Code	Special Finish (Stainless Steel Only)
P	CADMIUM PLATE AMS-QQ-P-416, TYPE II, CLASS 2 (NUT ONLY)
S	SILVER PLATE AMS2410 (NUT ONLY)

Table 4

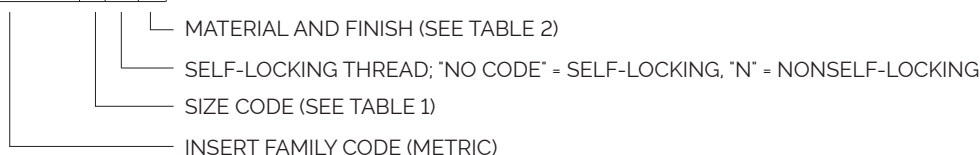
Code	Solid Film Lubricant (Internal Threads Only)
M	MOLYKOTE PER AS5272, TYPE 1

Table 5

Thread Locking Torque in Ncm				
Thread Size	M3	M4	M5	M6
Torque Value	12-70	22-110	30-150	55-230

PART NUMBER CALL OUT

CM618M|5|N|B



PART NUMBER CALL OUT: CM618M-M5 x 0.8-NONSELF-LOCKING-CARBON STEEL-CADMIUM PLATE



Cross Reference

Clarendon Made	SFS	The Young Engineers	Shur Lok
CM644M	EF1838	TYE2044M	SL644 M

Table 1

Code	Thread	Ø A	C	L (min)	H (min)	Tab
3	M3 x 0.5 - 4H6H	11.45	3.10	4.30	3.50	T2
4	M4 x 0.7 - 4H6H			5.55	4.80	
5	M5 x 0.8 - 4H6H			7.15	5.10	
6	M6 x 1.0 - 4H5H	12.65	3.60	7.15	5.10	T4

Dimension in MM

Table 2

Code	Material	Finish
B	CARBON STEEL EN 10726	CADMIUM PLATE AMS-QQ-P-416, TYPE II, CLASS 2
C	STAINLESS STEEL EN 14305	PASSIVATE PER AMS2700, METHOD 1, TYPE 2, CLASS 4

Table 3

Code	Special Finish (Stainless Steel Only)
P	CADMIUM PLATE AMS-QQ-P-416, TYPE II, CLASS 2
S	SILVER PLATE AMS2410

Table 4

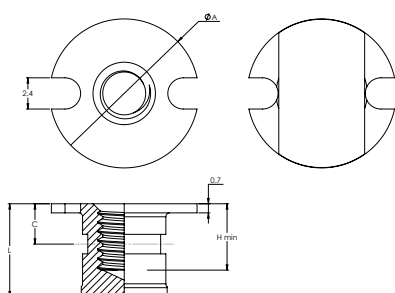
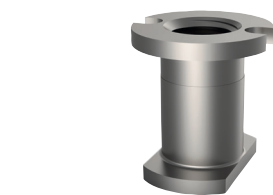
Code	Solid Film Lubricant (Internal Threads Only)
M	MOLYKOTE PER AS5272, TYPE 1

Table 5

Code	L
3	4.30
4	5.55
5	7.15
6	8.70
7	10.10
8	11.50
9	12.70
10	14.00
11	17.45

Table 6

Thread Locking Torque in Ncm				
Thread Size	M3	M4	M5	M6
Torque Value	12-70	22-110	30-150	55-230



PART NUMBER CALL OUT

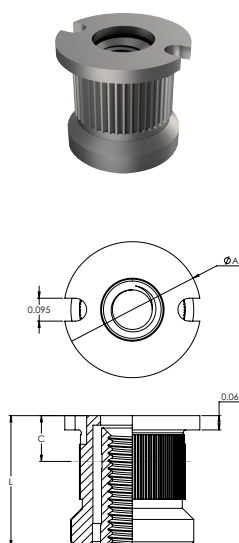
CM644M B4 - 6 P

- CM644M: INSERT FAMILY CODE (METRIC)
- B4: MATERIAL AND FINISH (SEE TABLE 2)
- : SELF-LOCKING THREAD; "-" = SELF-LOCKING, "N" = NONSELF-LOCKING
- 6: THREAD CODE (SEE TABLE 1)
- P: SPECIAL FINISH (SEE TABLE 3)
- "L" = LENGTH CODE (SEE TABLE 5)

PART NUMBER CALL OUT: CM644M-CARBON STEEL-M4 X 0.7-SELF-LOCKING-8.70MM-CADMIUM PLATE

Potted Inserts

CM2334M METRIC INSERT, BLIND THREADED, FLOATING NUT, LIGHTWEIGHT



Cross Reference

Clarendon Made	SFS	The Young Engineers	Shur Lok
CM2334M	EF1842	TYE2334M	SL2334 M

Table 1

Code	Nut Thread	Ø A	J	C	Tab
3	M3 x 0.5 - 4H6H	14.25	11.90	3.0	T6
4	M4 x 0.7 - 4H6H			3.5	
5	M5 x 0.8 - 4H6H				
6	M6 x 1.0 - 4H5H	17.40	15.00	4.0	T9

Dimension in MM

Table 2

Code	Material	Finish
B	CARBON STEEL EN 10726 (NUT & BODY)	CADMIUM PLATE AMS-QQ-P-416, TYPE II, CLASS 2
C	STAINLESS STEEL EN 14305 (NUT & BODY)	PASSIVATE PER AMS2700, METHOD 1, TYPE 2, CLASS 4
A	ALUMINIUM 3.1354 T351 (BODY)	ANODISE PER MIL-A-8625 TYPE I, CLASS 1
	CARBON STEEL EN 10726 (NUT)	CADMIUM PLATE PER AMS-QQ-P-416, TYPE II, CLASS 2
D	ALUMINIUM 3.1354 T351 (BODY)	LN9368-1101 - ALTERNATIVE - ANODISE TO MIL-A-8625 TYPE I, CLASS 1
	STAINLESS STEEL EN 14305 (NUT)	PASSIVATE PER AMS2700, METHOD 1, TYPE 2, CLASS 4

Table 3

Code	Special Finish (Stainless Steel Only)
P	CADMIUM PLATE AMS-QQ-P-416, TYPE II, CLASS 2 (NUT ONLY)
S	SILVER PLATE AMS2410 (NUT ONLY)

Table 4

Code	Length
1	7.9
2	8.9
3	9.5
4	11.6
5	14.4
6	17.5
7	20.7
8	23.8
9	26.9
10	30.1

Table 5

Code	Solid Film Lubricant (Internal Threads Only)
M	MOLYKOTE PER AS5272, TYPE 1

Table 6

Locking Torque in Ncm				
Thread Size	M3	M4	M5	M6
Torque Value	12-70	22-110	30-150	55-230

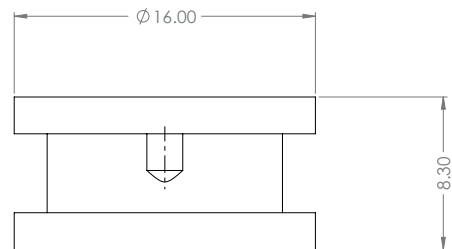
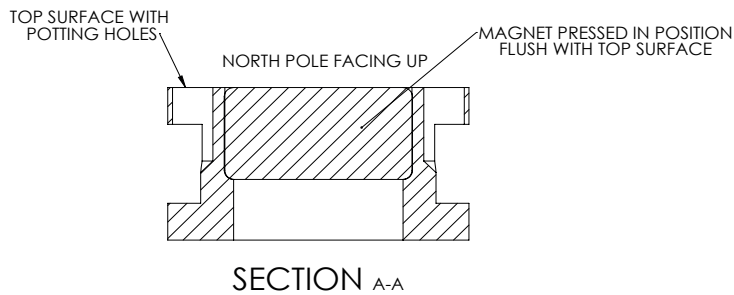
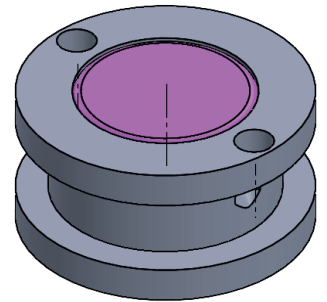
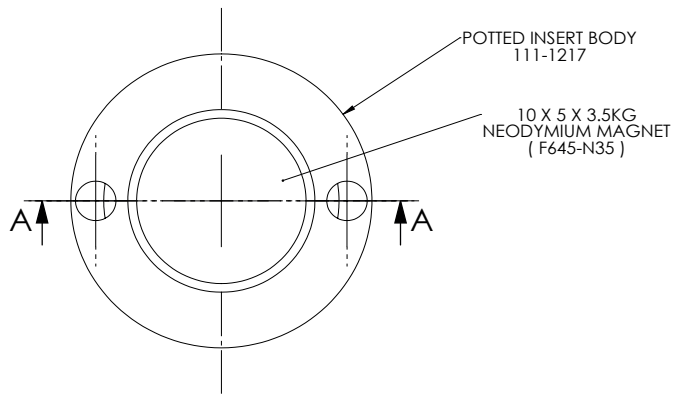
PART NUMBER CALL OUT

CM2334M **5** - **5** **B**

- └─ MATERIAL AND FINISH (SEE TABLE 2)
- └─ "L" = LENGTH CODE
- └─ SELF-LOCKING THREAD; "-" = SELF-LOCKING, "N" = NONSELF-LOCKING
- └─ SIZE CODE (SEE TABLE 1)
- └─ INSERT FAMILY CODE (METRIC)

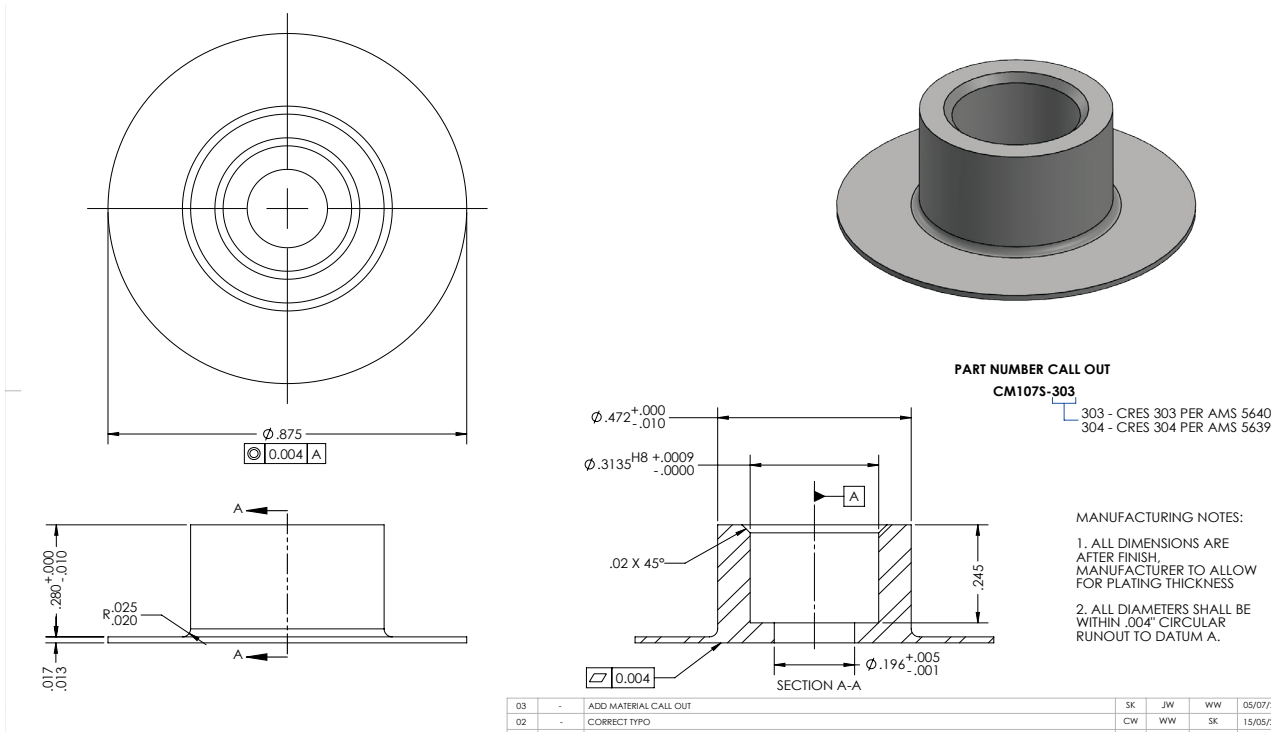
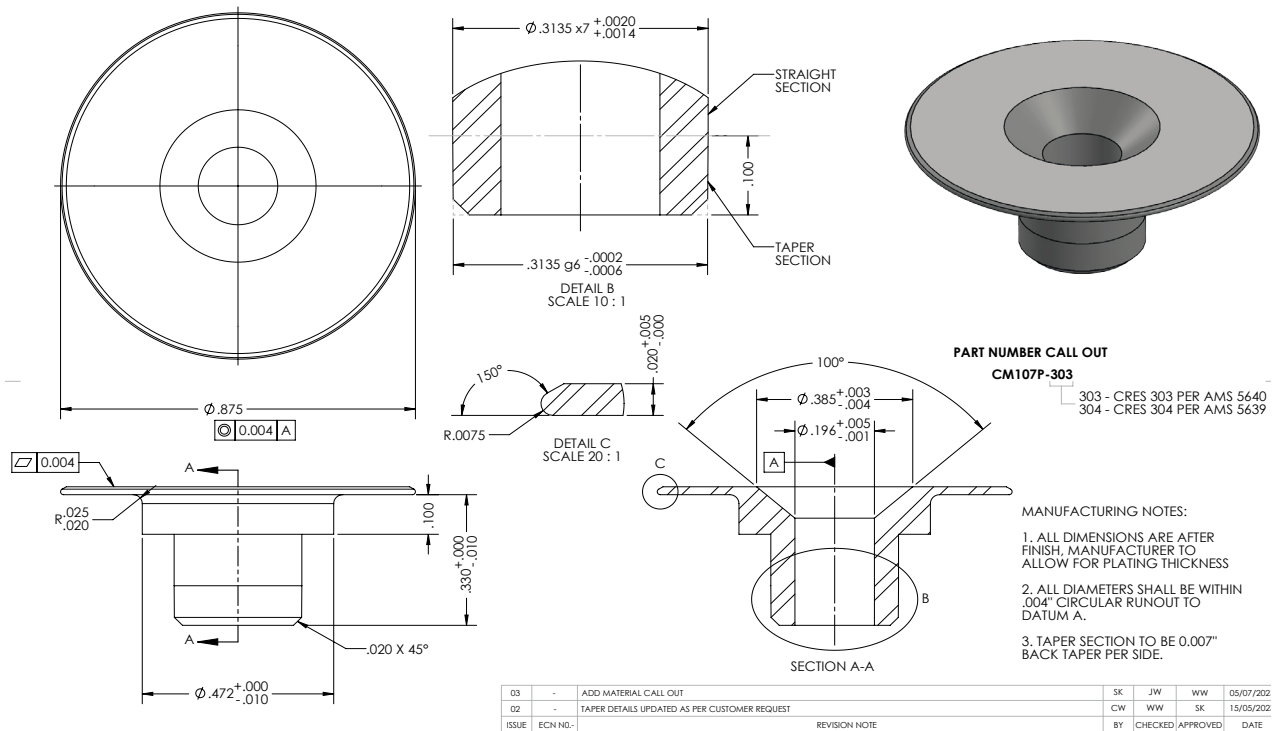
PART NUMBER CALL OUT: CM2334M-M5 x 0.8-SELF-LOCKING-14.4MM-CARBON STEEL-CADMIUM PLATE





Potted Inserts

CM107 PLUG AND SLEEVE INSERT



Spare Tab Ordering Guide

All CM inserts come with tabs provided. As standard, the tab is supplied in aluminium and separate from the insert. The below guide is for purchasing spare parts.

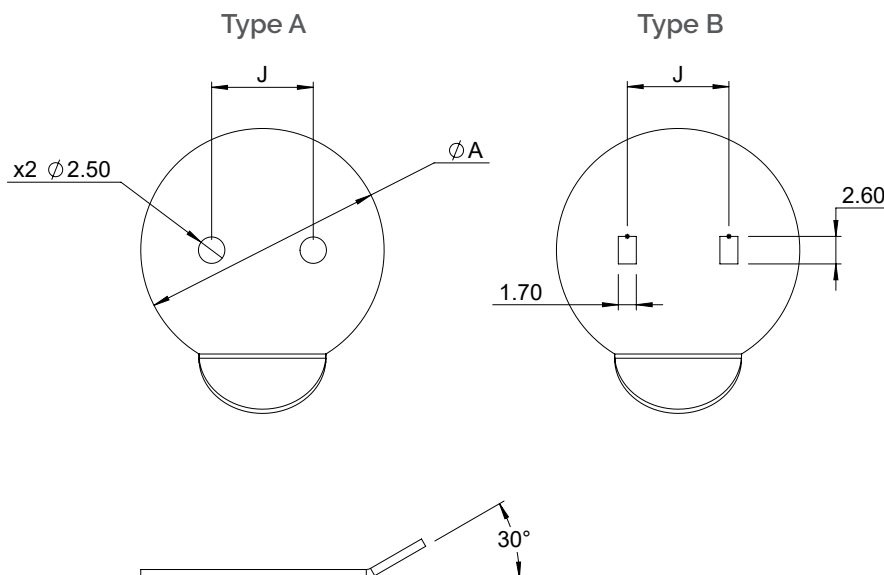


Table 1

Distance Ø A	Part Code	Hole Distance J	NAS1837 REF DASH NO.
Type A			
23	C2/3	9.2 (0.358)	T2
23	C2/3	9.2 (0.366)	T3
23	C4	10.3 (0.405)	T4
23	C5	11.9 (0.468)	T6
23	C6	12.7 (0.5)	T7
23	C7	14.0 (0.551)	
28.7	C8	15.0 (0.590)	T9
28.7	C9	16.6 (0.653)	T10
28.7	C10	18.2 (0.716)	T11
28.7	C11	19.2 (0.755)	
Type B			
23	C20	6.33 (0.249)	
23	C21	7.12 (0.280)	
23	C22	8.38 (0.325)	

Table 2

Code	Material
1	Aluminium (thickness 0.3-0.4)
2	PVC (thickness 0.2-0.3)

PART NUMBER CALL OUT

NAS1837
CM1837-1-C2/3

Tab Dimension (Table 1)
Tab material - (Table 2)
Product Family

Installation tabs can be purchased separately from the insert.
Use the cross reference guide below for purchasing spare tabs.

INSERT FIRST DASH NO.	CM REF DASH NO.	NAS1837 REF DASH NO.
FOR NAS1832, NAS1833, NAS1834		
-06	C2/3	T3
-08	C2/3	T3
-3	C2/3	T3
-4	C5	T6
-5	C5	T6
-6	C8	T9
FOR NAS1835		
-08	C6	T7
-3	C6	T7
-4	C8	T9
-5	C9	T10
-6	C10	T11
FOR NAS1836		
-06	C2/3	T2
-08	C2/3	T2
-3	C2/3	T2
-4	C4	T4

Clarendon Made (CM)	NAS Standards (NAS)	SFS (EF)	The Young Engineers (TYE)	Shur Lok (SL)	OEM / Other Standards
CM1832	NAS1832	EF1832	TYE2002	SL601	CDIN08 Series
CM1833	NAS1833	EF1833	TYE2007	SL602	CDIN09 Series
CM1834	NAS1834	EF1834	TYE2003	SL603	CDSP5903 Driessen 248006
CM1834	NAS1834K	EF1834K	TYE2004	SL604	CDSP5904 Driessen 248007
CM1835	NAS1835	EF1835	TYE1835	SL606	CDIN06 Series
CM1836	NAS1836	EF1836	TYE2001	SL607	CDIN07 Series Driessen 248004
CM1837	NAS1837	EF1837	NAS1837	SLT600	
CM618		EF1840	TYE2018	SL618	CDIN10 D137HF
CM644		EF1838	TYE2044	SL644	CDIN12
CM2334		EF1842	TYE2334	SL2334	CDSP5907
CM601M		EF1001	TYE2002M	SL601 Metric	
CM602M		EF1002	TYE2007M	SL602 Metric	
CM603M		EF1003	TYE2003M	SL603 Metric	
CM604M		EF1004	TYE2004M	SL604 Metric	
CM606M		EF1005	TYE1835M	SL606 Metric	
CM607M		EF1006	TYE2001M	SL607 Metric	
CM644M		EF1838 Metric	TYE2044M	SL644 Metric	
CM2334M		EF1842 Metric	TYE2334M	SL2334 Metric	
CM6224			TYE2024	SL6224	CDIN23
CM5345		EF1024	TYE2048		CDIN13
CM1846			TYE2068	SL2868	CDIN15
CM1847			TYE2168	SL6519	CDSP5906
CM1936		EF1936	TYE2161	SL6520	CDSP5905
CM626				SL626	
CM6288		EF1843	TYE2049	SL6061	
CM2054			TYE2054		
CM398 (helicoil) aluminium					



Specialty Fasteners

www.clarendonsf.com

Contact us

Germany: +49 (0) 7436 91087 - 0
UK/Europe Sales: +44 (0) 1455 825 445
USA Sales: +1 714 842 2603
ASIA Sales: +66 99 735 2318

sales@clarendonsf.com

Manufacturing and
materials sourced
in the UK and
GERMANY



Accreditations

AS/EN9120
AS/EN9100

LOCATIONS



Totnes
UK



Royal Wootton
Bassett
UK



Leicester
UK



California
USA



Texas
USA



Chihuahua
Mexico



Stuttgart
Germany



Asia Pacific
Bangkok